



**Fepic®**

**WASHING INTRUCTIONS**

DO NOT USE ANY TYPE OF BLEACH OR STAIN REMOVING CHEMICALS  
BEFORE CUTTING / STITCHING, FABRIC SHOULD BE SOAKED IN WATER  
( ALL COMPONENTS SEPARATELY ) FOR 15 MINUTES  
DO NOT KEEP WET FABRIC IN TWISTED FROM IN ORDER TO AVOID COPY MARKS |

WASH COLOURED AND WHITE FABRICS SEPARATELY  
IRON CLOTHES AT MODERATE TEMPERATURE | DO NOT DRY FABRIC IN DIRECT SUNLIGHT  
( EXTRA LACES, HANGINGS AND ACCESSORIES ARE NOT INDUED )

**D - 5424**







**Fepic®**

**WASHING INTRUCTIONS**

DO NOT USE ANY TYPE OF BLEACH OR STAIN REMOVING CHEMICALS  
BEFORE CUTTING / STITCHING, FABRIC SHOULD BE SOAKED IN WATER  
( ALL COMPONENTS SEPARATELY ) FOR 15 MINUTES

DO NOT KEEP WET FABRIC IN TWISTED FORM IN ORDER TO AVOID COPY MARKS |

WASH COLOURED AND WHITE FABRICS SEPARATELY  
IRON CLOTHES AT MODERATE TEMPERATURE | DO NOT DRY FABRIC IN DIRECT SUNLIGHT  
( EXTRA LACES, HANGINGS AND ACCESSORIES ARE NOT INDUED )

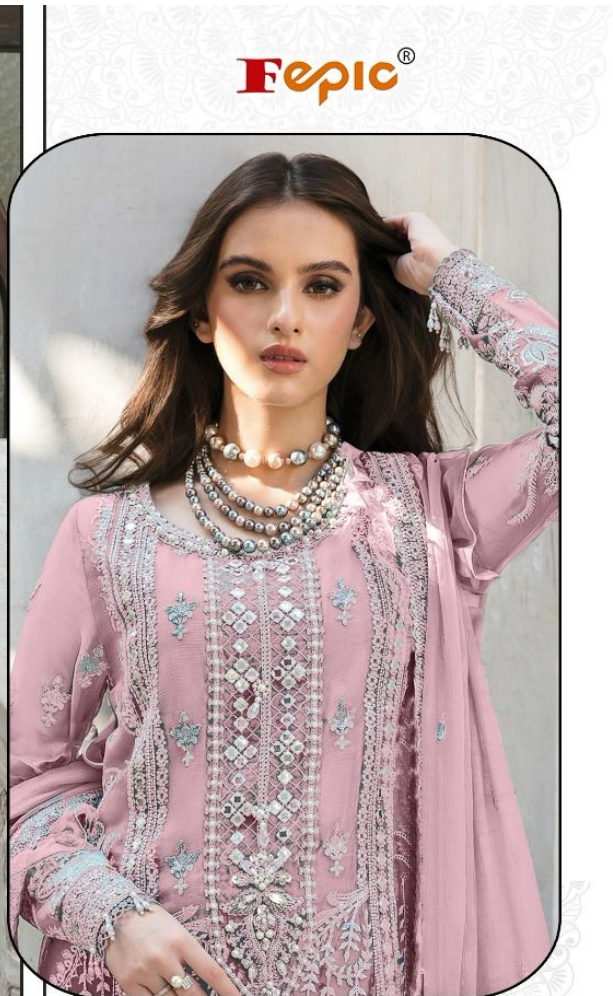
**D - 5424**











**Fepic®**

**WASHING INTRUCTIONS**

DO NOT USE ANY TYPE OF BLEACH OR STAIN REMOVING CHEMICALS  
BEFORE CUTTING / STITCHING, FABRIC SHOULD BE SOAKED IN WATER  
( ALL COMPONENTS SEPARATELY ) FOR 15 MINUTES  
DO NOT KEEP WET FABRIC IN TWISTED FROM IN ORDER TO AVOID COPY MARKS |

WASH COLOURED AND WHITE FABRICS SEPARATELY  
IRON CLOTHES AT MODERATE TEMPERATURE | DO NOT DRY FABRIC IN DIRECT SUNLIGHT  
( EXTRA LACES, HANGINGS AND ACCESSORIES ARE NOT INDUED )

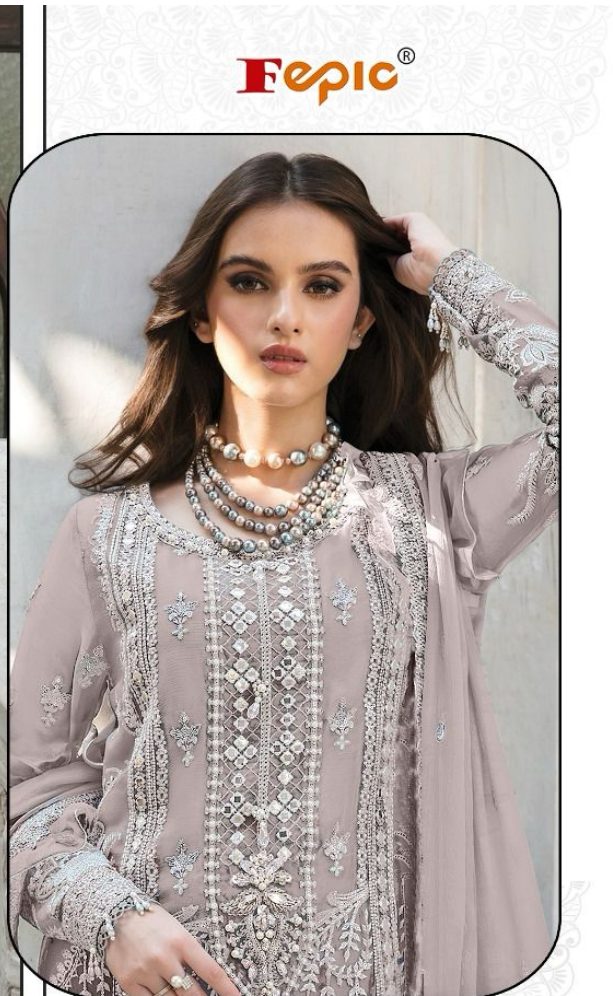
**D - 5424 B**











**Fepic®**

**WASHING INTRUCTIONS**

DO NOT USE ANY TYPE OF BLEACH OR STAIN REMOVING CHEMICALS  
BEFORE CUTTING / STITCHING, FABRIC SHOULD BE SOAKED BE SOAKED IN WATER  
( ALL COMPONENTS SEPARATELY ) FOR 15 MINUTES  
DO NOT KEEP WET FABRIC IN TWISTED FROM IN ORDER TO AVOID COPY MARKS |

WASH COLOURED AND WHITE FABRICS SEPARATELY  
IRON CLOTHES AT MODERATE TEMPERATURE | DO NOT DRY FABRIC IN DIRECT SUNLIGHT  
( EXTRA LACES, HANGINGS AND ACCESSORIES ARE NOT INDUED )

**D - 5424 C**











**Fepic®**

**WASHING INTRUCTIONS**

DO NOT USE ANY TYPE OF BLEACH OR STAIN REMOVING CHEMICALS  
BEFORE CUTTING / STITCHING, FABRIC SHOULD BE SOAKED IN WATER  
( ALL COMPONENTS SEPARATELY ) FOR 15 MINUTES  
DO NOT KEEP WET FABRIC IN TWISTED FROM IN ORDER TO AVOID COPY MARKS |  
WASH COLOURED AND WHITE FABRICS SEPARATELY  
IRON CLOTHES AT MODERATE TEMPERATURE | DO NOT DRY FABRIC IN DIRECT SUNLIGHT  
( EXTRA LACES, HANGINGS AND ACCESSORIES ARE NOT INDUED )

**D - 5424 D**







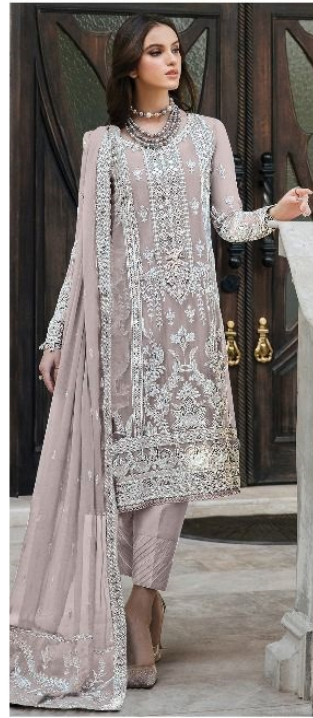




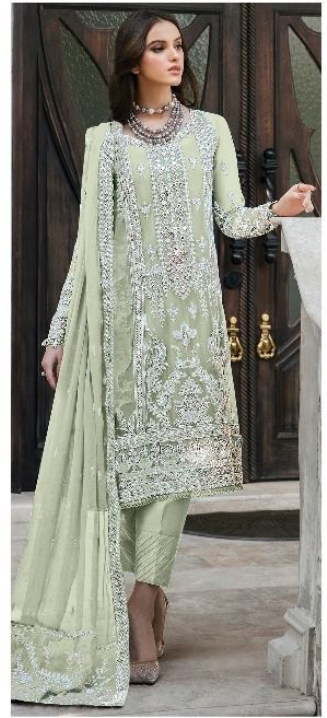
D - 5424 A



D-5424 B



D-5424 C



D-5424 D

**Fepic**®

**Rosemeen**®