







Ramshi
#R-554-C

TOP: KUKICHUWET WITH HEAVY EMBROIDERY
BOTTOM: DALLI SASTOON
SHIRT: NET WITH HEAVY EMBROIDERY

WASH IN COLD WATER
DO NOT BLEACH OR USE BLEACHING CHEMICALS
DO NOT IRON



Ramshi
#R-554-D

100% PURE COTTON WITH HEAVY EMBROIDERY
AND HEAVY BEADWORK
ON THE FABRIC OF HIGH QUALITY MATERIAL

WASH IN COLD WATER
DO NOT BLEACH
DO NOT IRON
DO NOT DRY CLEAN





Ramsha
#R-554

TOP: 60% GEORGET WITH HEAVY EMBROIDERY
BOTTOM: 80% CANTON
DUPATTA: NET WITH HEAVY EMBROIDERY

• 100% CASHMERE
• 100% SILK
• 100% COTTON
• 100% POLYESTER
• 100% RAYON
• 100% LINEN
• 100% WOOL
• 100% JUTE
• 100% HEMP
• 100% BAMBOO
• 100% LINO
• 100% TENCEL
• 100% VISCOSE
• 100% MODAL
• 100% BLENDED
• 100% MIXED
• 100% OTHERS



#R-554-B



TOP- FOX GEORGET WITH HEAVY EMBROIDERY
BOTTOM- DULL SANTOON
DUPATTA - NET WITH HEAVY EMBROIDERY

Ⓟ DRY CLEAN ONLY.
ⓧ DO NOT USE ANY BLEACH OR STAIN REMOVING CHEMICAL.
Ⓡ IRON THE FABRIC AT MODERATE TEMPERATURE.



#R-554-A



TOP- FOX GEORGET WITH HEAVY EMBROIDERY
BOTTOM- DULL SANTOON
DUPATTA - NET WITH HEAVY EMBROIDERY

Ⓟ DRY CLEAN ONLY.
ⓧ DO NOT USE ANY BLEACH OR STAIN REMOVING CHEMICAL.
☎ IRON THE FABRIC AT MODERATE TEMPERATURE.



#R-554-C



TOP- FOX GEORGET WITH HEAVY EMBROIDERY
BOTTOM- DULL SANTOON
DUPATTA - NET WITH HEAVY EMBROIDERY

Ⓟ DRY CLEAN ONLY.
ⓧ DO NOT USE ANY BLEACH OR STAIN REMOVING CHEMICAL.
Ⓡ IRON THE FABRIC AT MODERATE TEMPERATURE.



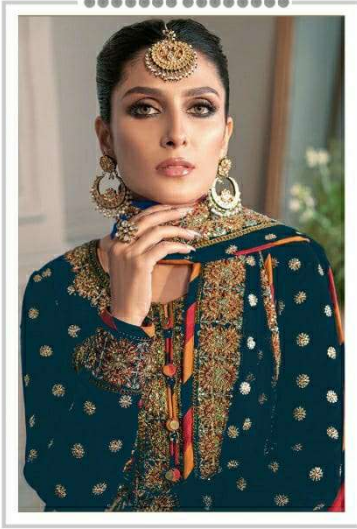
#R-554-D



TOP- FOX GEORGET WITH HEAVY EMBROIDERY
BOTTOM- DULL SANTOON
DUPATTA - NET WITH HEAVY EMBROIDERY

Ⓟ DRY CLEAN ONLY.
⊗ DO NOT USE ANY BLEACH OR STAIN REMOVING CHEMICAL.
☎ IRON THE FABRIC AT MODERATE TEMPERATURE.

Ramsha®
554-NX



Ramsha®
554-NX



#R-554-A



#R-554-B



#R-554-C



#R-554-D