

A woman is shown from the waist up, wearing a grey long-sleeved top with a red and gold floral embroidery. A red shawl with blue and gold floral patterns is draped over her shoulders. She is wearing a gold headband, large gold earrings with tassels, and a ring. The background is dark and out of focus.

**Zulfat**<sup>®</sup>  
Designer Suits

*Madhubani*

**Zulfat**<sup>®</sup>  
Designer Suits

*Mudhuhani*  
Bright look is one of  
the strongest fashion  
statements of the season.









**Zulfat**  
Designer Suits

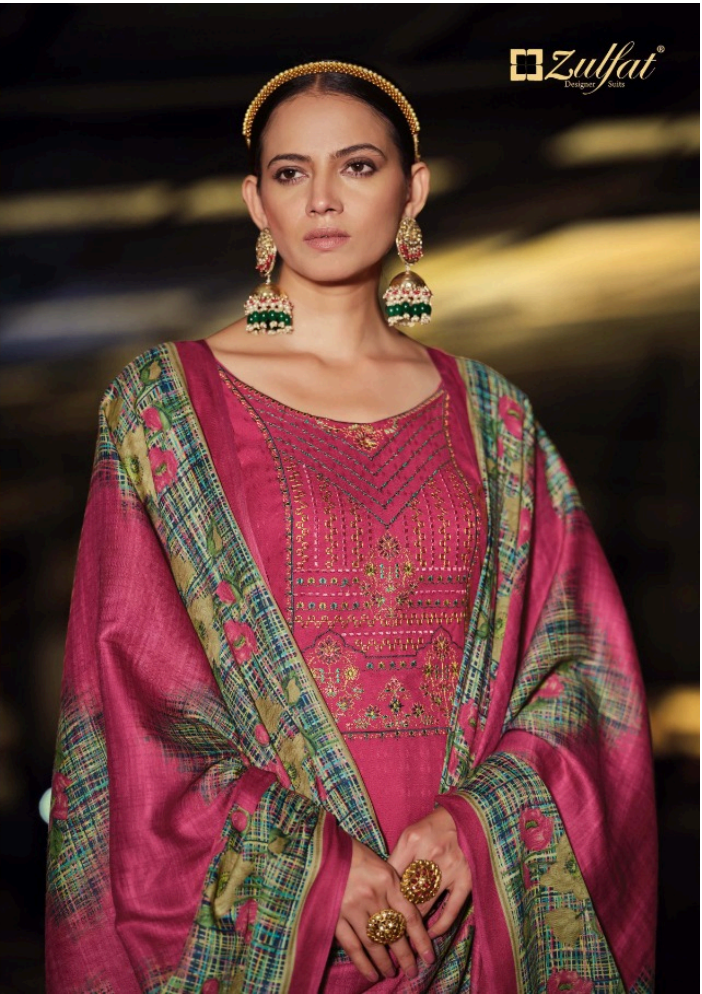
*Maahubani*  
Bright look is one of the strongest fashion  
statement of the season.













 **Zulfat**<sup>®</sup>  
Designer Suits

  
*Madhubani*  
Bright look is one of the strongest fashion  
statements of the season.







**Zulfai**  
DESIGNER  
*Maadhani*  
Maadhani is one of the original fashion  
statements of the season.  
D.NO :- 455-007



455-001



455-002



455-003



455-004



455-005



455-006



455-007



455-008



455-009



455-010

Madhubani

Zulfat  
Handmade Sarees







A woman is shown from the waist up, wearing a grey long-sleeved top with a red and gold floral embroidery. A red shawl with blue and gold floral patterns is draped over her shoulders. She is wearing a gold headband, large gold earrings with tassels, and a ring. The background is dark and out of focus.

**Zulfat**<sup>®</sup>  
Designer Suits

*Madhubani*