

A woman with long brown hair is smiling and talking on a black rotary telephone. She is wearing a blue and gold patterned dress with intricate floral and leaf designs. She is also wearing a pearl necklace and a large gold ring. The background is a light-colored wall with a window. The overall style is elegant and traditional.

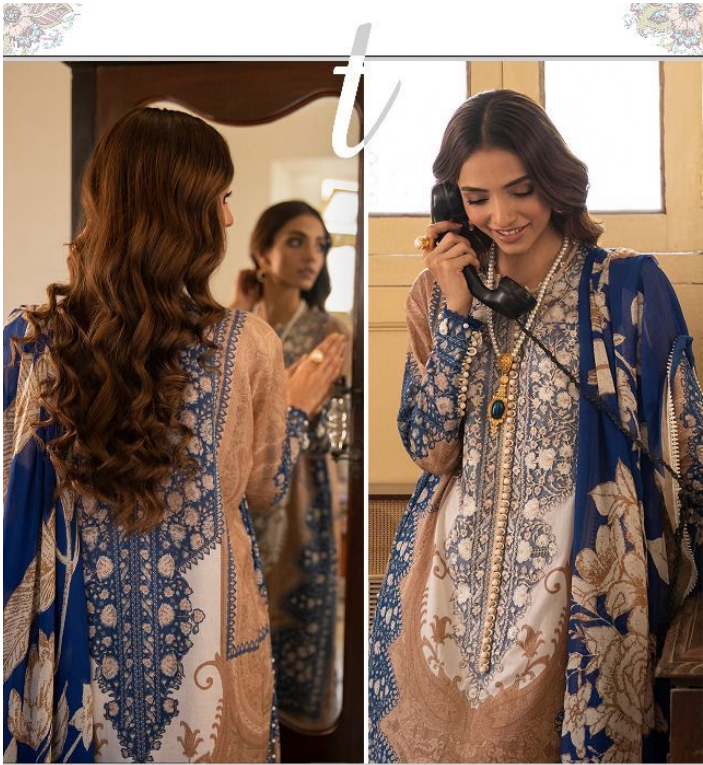
Shree®
FABS

NX
SANA SAFINAZ
MUZLIN COLLECTION
VOL-9



Shree®
FABS

NX
SANA SAFINAZ
MUZLIN COLLECTION
VOL-9



SANA SAFINAZ^{NX}
MUZLIN COLLECTION
VOL-9





a

SANA SAFINAZ^{NX}
MUZLIN COLLECTION
VOL-9



2375



S

SANA SAFINAZ^{NX}
MUZLIN COLLECTION
VOL-9



2371



SANA SAFINAZ^{NX}
MUZLIN COLLECTION
VOL-9



2373



SANA SAFINAZ^{NX}
MUZLIN COLLECTION
VOL-9





SANA SAFINAZ^{NX}
MUZLIN COLLECTION
VOL-9



2371



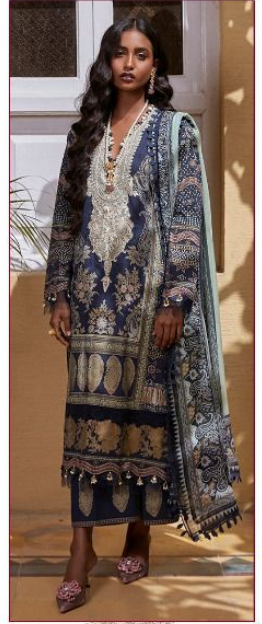
2373



2374



2375



2376