



Emb Front

Emb Front

Emb Net Dupatta  
With Frill Borders

Ramsha

#R-480-A

TOP - FOX GEORGETE, WITH EMBROIDERY  
BOTTOM - DULL SATEEN  
DUPATTA - NET WITH EMBROIDERY WITH FRILL

☑️ DRY CLEAN ONLY  
☑️ DO NOT USE AND BLEACH OR STAIN REMOVING CHEMICAL  
☑️ IRON THE FABRIC AT MODERATE TEMPERATURE



Emb Front

Emb Front

Emb Net Dupatta  
With Frill Borders

Ramsha

#R-480-A

TOP - FOX GEORGETT, WITH EMBROIDERY  
BOTTOM - DULL SATEEN  
DUPATTA - NET WITH EMBROIDERY WITH FRILL  
\* DRY CLEAN ONLY  
\* DO NOT USE AND BLEACH OR STAIN REMOVING CHEMICAL  
\* IRON THE FABRIC AT MODERATE TEMPERATURE



#R-480-A



TOP- FOX GEORGETL WITH EMBROIDERY  
BOTTOM- DULL SANTOON  
DUPATTA - NET WITH EMBROIDERY WITH FREEL

- Ⓟ DRY CLEAN ONLY.
- ⓧ DO NOT USE ANY BLEACH OR STAIN REMOVING CHEMICAL.
- ☎ IRON THE FABRIC AT MODERATE TEMPERATURE.





#R-480-C



TOP- FOX GEORGETL WITH EMBROIDERY  
BOTTOM- DULL SANTOON  
DUPATTA - NET WITH EMBROIDERY WITH FREEL

- Ⓟ DRY CLEAN ONLY.
- ✘ DO NOT USE ANY BLEACH OR STAIN REMOVING CHEMICAL.
- ☎ IRON THE FABRIC AT MODERATE TEMPERATURE.



#R-480-B



TOP- FOX GEORGETL WITH EMBROIDERY  
BOTTOM- DULL SANTOON  
DUPATTA - NET WITH EMBROIDERY WITH FREEL

- Ⓟ DRY CLEAN ONLY.
- ⓧ DO NOT USE ANY BLEACH OR STAIN REMOVING CHEMICAL.
- 🧊 IRON THE FABRIC AT MODERATE TEMPERATURE.





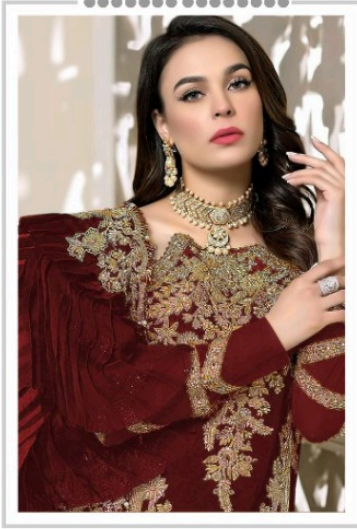
#R-480-D



TOP- FOX GEORGETL WITH EMBROIDERY  
BOTTOM- DULL SANTOON  
DUPATTA - NET WITH EMBROIDERY WITH FREEL

- Ⓟ DRY CLEAN ONLY.
- ⊗ DO NOT USE ANY BLEACH OR STAIN REMOVING CHEMICAL.
- ☎ IRON THE FABRIC AT MODERATE TEMPERATURE.

Ramsha®  
480-NX



#R-480-A



#R-480-B



#R-480-C



#R-480-D

Ramsha®  
480-NX