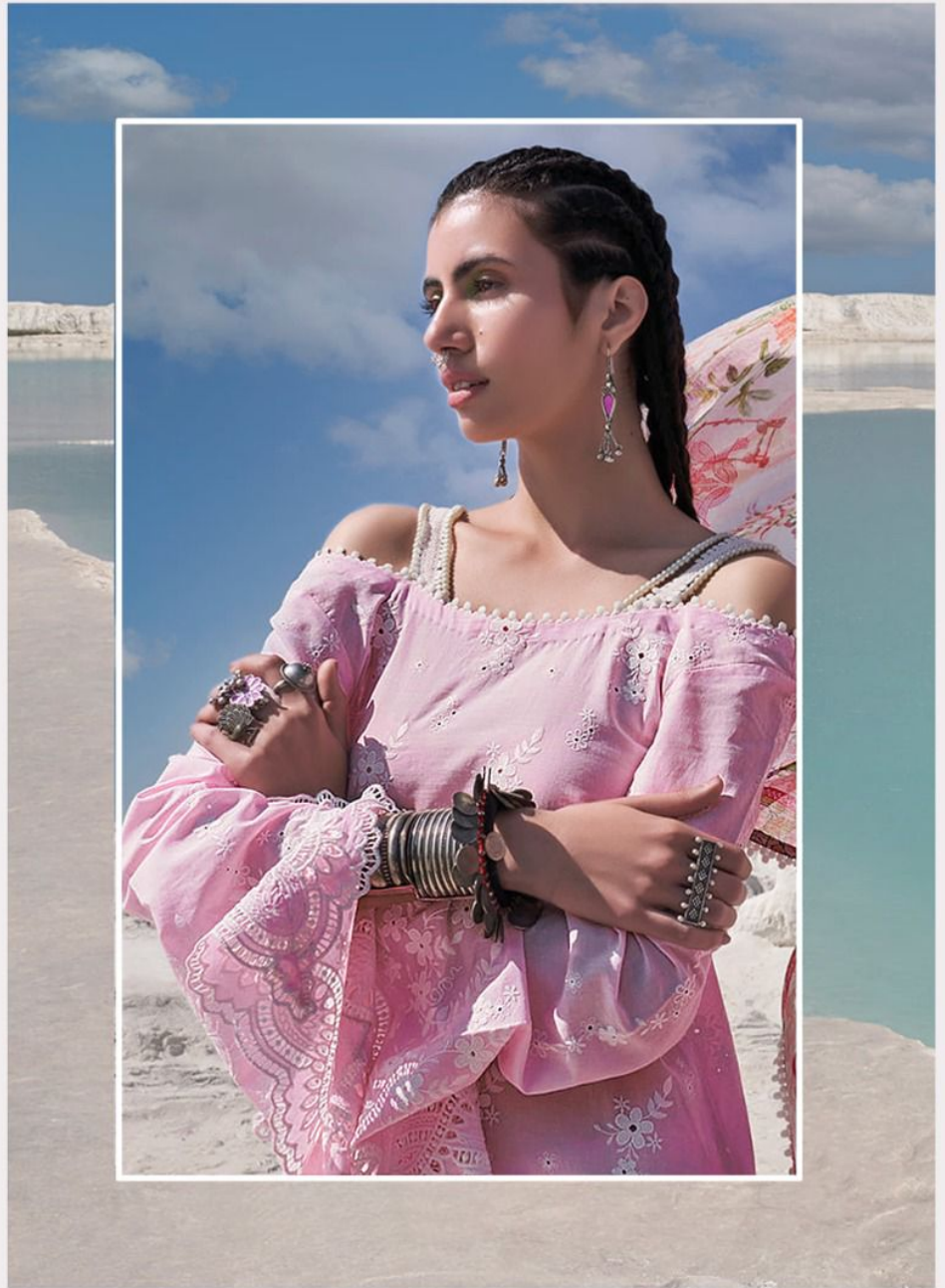


Fepic[®]

Rosemeen[®]

IMAGE CHIKANKARI
COLLECTION

D.NO.46025



Epic®



Rosemeen®

IMAGE CHIKANKARI
COLLECTION

Fepic[®]



D.NO.46024

Epic



Rosemeen[®]
IMAGE CHIKANKARI
COLLECTION
D.NO.46023

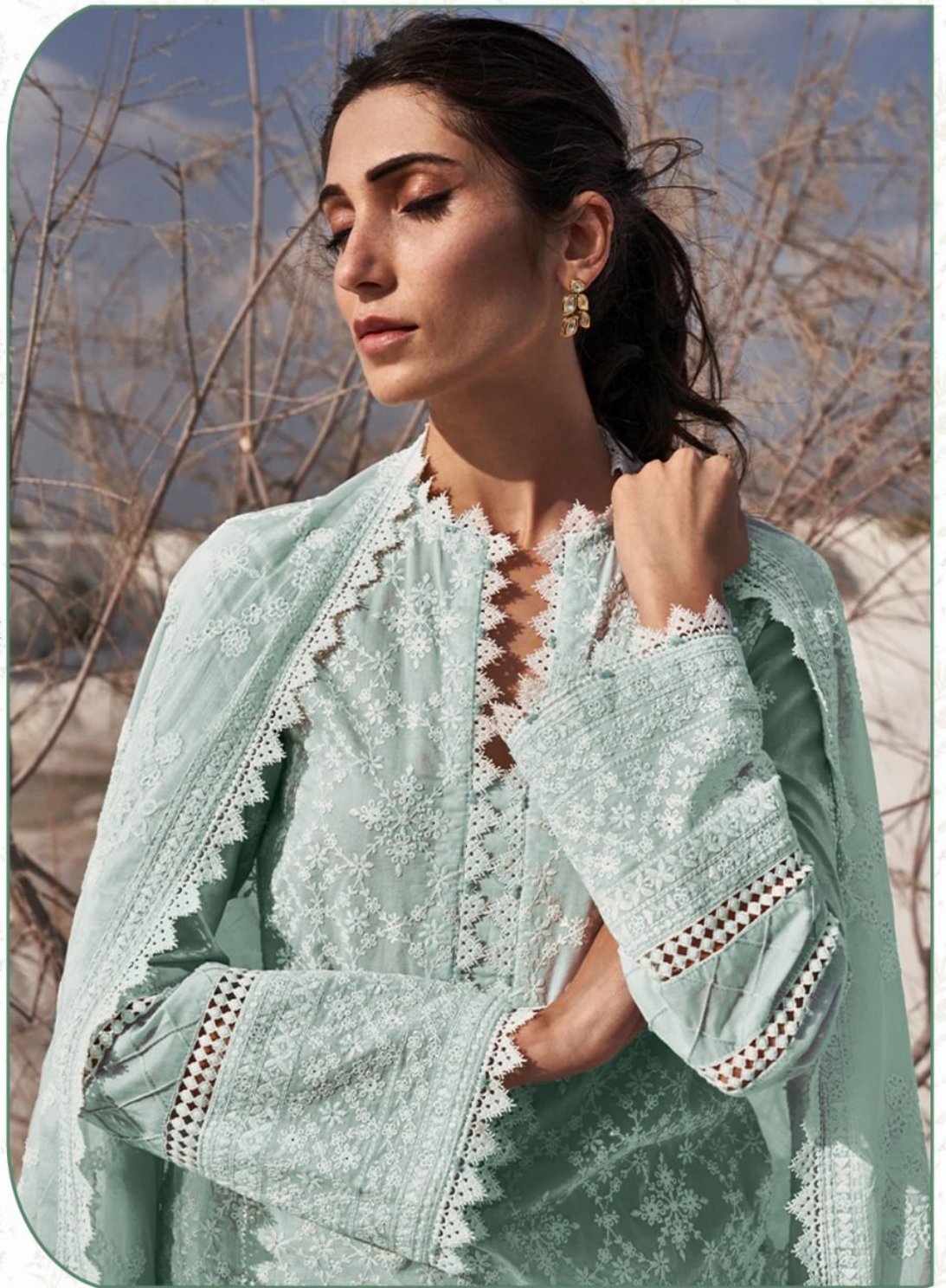


Fepic[®]

Rosemeen[®]

IMAGE CHIKANKARI
COLLECTION

D.NO.46021



Fepic[®]



Rosemeen[®]
IMAGE CHIKANKARI
COLLECTION

D.NO.46022





Fepic[®]

Rosemeen[®]

IMAGE CHIKANKARI
COLLECTION

D.NO.46027



Fepic®



WASHING INTRUCTIONS

DO NOT USE ANY TYPE OF BLEACH OR STAIN REMOVING CHEMICALS
BEFORE CUTTING / STITCHING, FABRIC SHOULD BE SOAKED IN WATER
(ALL COMPONENTS SEPARATELY) FOR 15 MINUTES
DO NOT KEEP WET FABRIC IN TWISTED FROM IN ORDER TO AVOID COPY MARKS |
WASH COLOURED AND WHITE FABRICS SEPARATELY
IRON CLOTHES AT MODERATE TEMPERATURE | DO NOT DRY FABRIC IN DIRECT SUNLIGHT
(EXTRA LACES, HANGINGS AND ACCESSORIES ARE NOT INDDUED)

Rosemeen®

IMAGE CHIKANKARI
COLLECTION

D.NO.46023



Fepic®



WASHING INTRUCTIONS

DO NOT USE ANY TYPE OF BLEACH OR STAIN REMOVING CHEMICALS
BEFORE CUTTING / STITCHING, FABRIC SHOULD BE SOAKED BE SOAKED IN WATER
(ALL COMPONENTS SEPARATELY) FOR 15 MINUTES
DO NOT KEEP WET FABRIC IN TWISTED FROM IN ORDER TO AVOID COPY MARKS |
WASH COLOURED AND WHITE FABRICS SEPARATELY
IRON CLOTHES AT MODERATE TEMPERATURE | DO NOT DRY FABRIC IN DIRECT SUNLIGHT
(EXTRA LACES, HANGINGS AND ACCESSORIES ARE NOT INDUDED)

Rosemeen®

IMAGE CHIKANKARI
COLLECTION

D.NO.46022





D.NO.46021



D.NO.46022



D.NO.46023



D.NO.46024



D.NO.46025



D.NO.46026




D.NO.46027

Fepic[®]

Rosemeen[®]
IMAGE CHIKANKARI
COLLECTION

 :_Fepic

 :Fb.com/Fepic11

Fepic®



WASHING INTRUCTIONS

DO NOT USE ANY TYPE OF BLEACH OR STAIN REMOVING CHEMICALS
BEFORE CUTTING / STITCHING, FABRIC SHOULD BE SOAKED IN WATER
(ALL COMPONENTS SEPARATELY) FOR 15 MINUTES
DO NOT KEEP WET FABRIC IN TWISTED FROM IN ORDER TO AVOID COPY MARKS |
WASH COLOURED AND WHITE FABRICS SEPARATELY
IRON CLOTHES AT MODERATE TEMPERATURE | DO NOT DRY FABRIC IN DIRECT SUNLIGHT
(EXTRA LACES, HANGINGS AND ACCESSORIES ARE NOT INDDUED)

Rosemeen®
IMAGE CHIKANKARI
COLLECTION
D.NO.46024

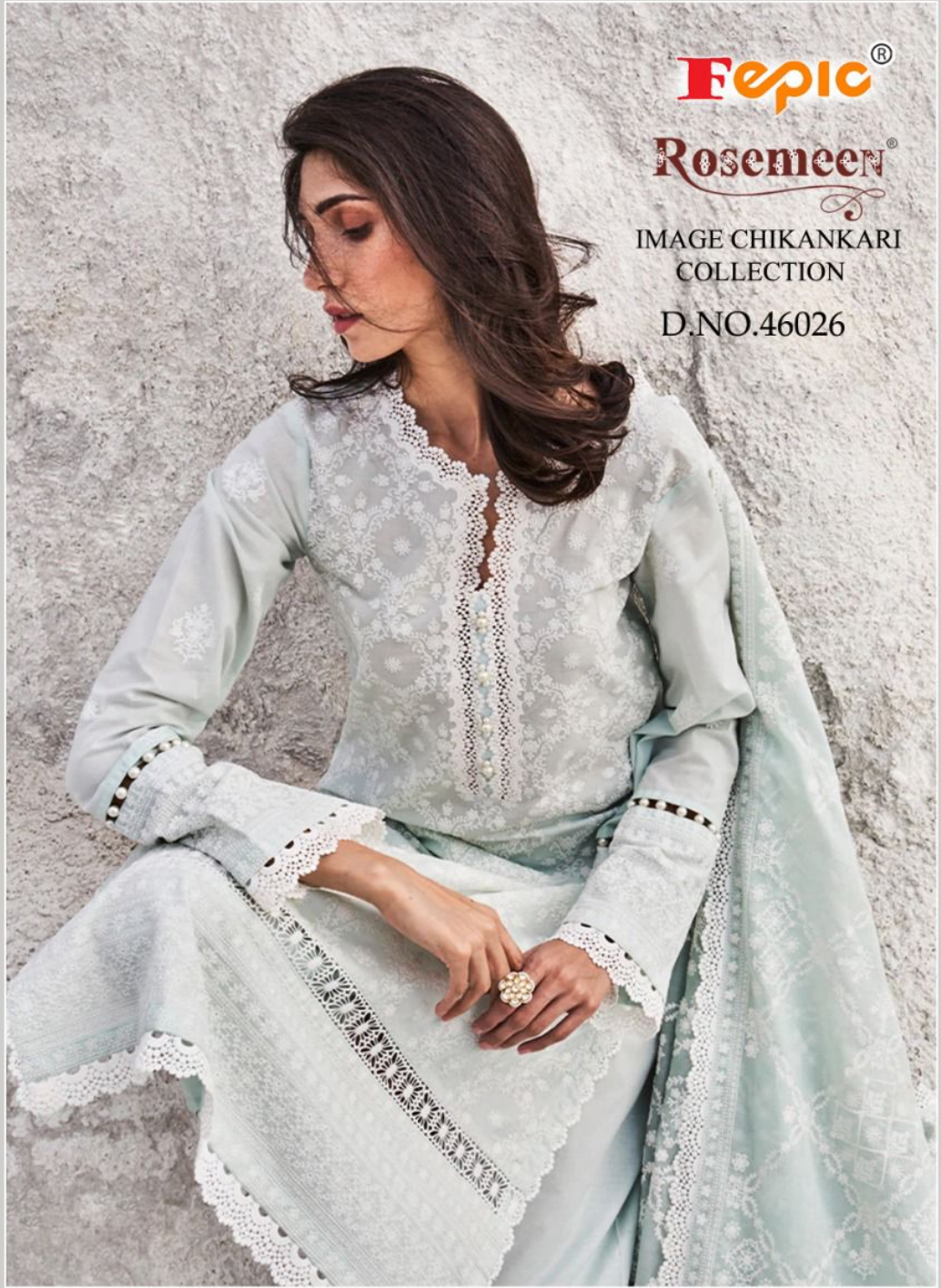


Epic[®]

Rosemeen[®]

IMAGE CHIKANKARI
COLLECTION

D.NO.46026





D.No: D-164B

TOP: GEORGETTE WITH EMBROIDERY

**BOTTOM/
INNER: SANTOON**

DUPATTA: NET WITH EMBROIDERY

D
DEEPSY
SUIT



D.No: D-164A

TOP: GEORGETTE WITH EMBROIDERY

**BOTTOM/
INNER: SANTOON**

DUPATTA: NET WITH EMBROIDERY

D
DEEPSY
SUIT



D.No: D-164B

TOP: GEORGETTE WITH EMBROIDERY

**BOTTOM/
INNER: SANTOON**

DUPATTA: NET WITH EMBROIDERY

D
DEEPSY
SUITS



D.No: D-164D

TOP: GEORGETTE WITH EMBROIDERY

**BOTTOM/
INNER: SANTOON**

DUPATTA: NET WITH EMBROIDERY

D
DEEPSY
SUITS



D.No: D-164C

TOP: GEORGETTE WITH EMBROIDERY

**BOTTOM/
INNER: SANTOON**

DUPATTA: NET WITH EMBROIDERY



TOP: Georgette with embroidery

BOTTOM: sentoon

DUPATTA: Net with embroidery



D-164A



D-164B



D-164C



D-164D