



VOL -130





Nitya™

The philosophy this season puts the spotlight on how an evening ensemble should be elegant and more so, strong, more compromising for a night even for the traditional





Nitya

D.NO.3005

Nitya

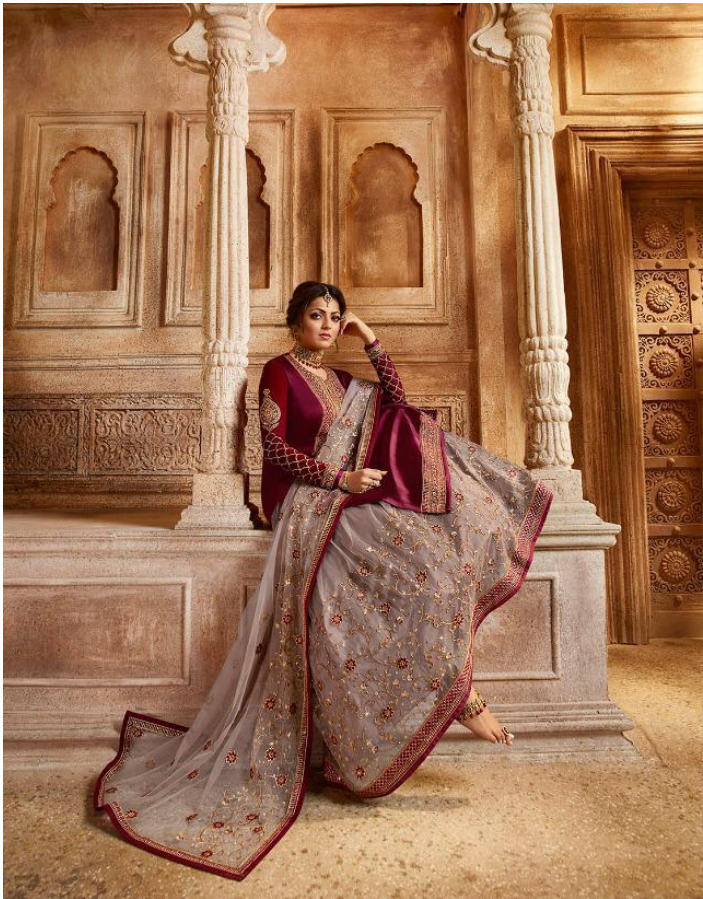


D.NO.3009



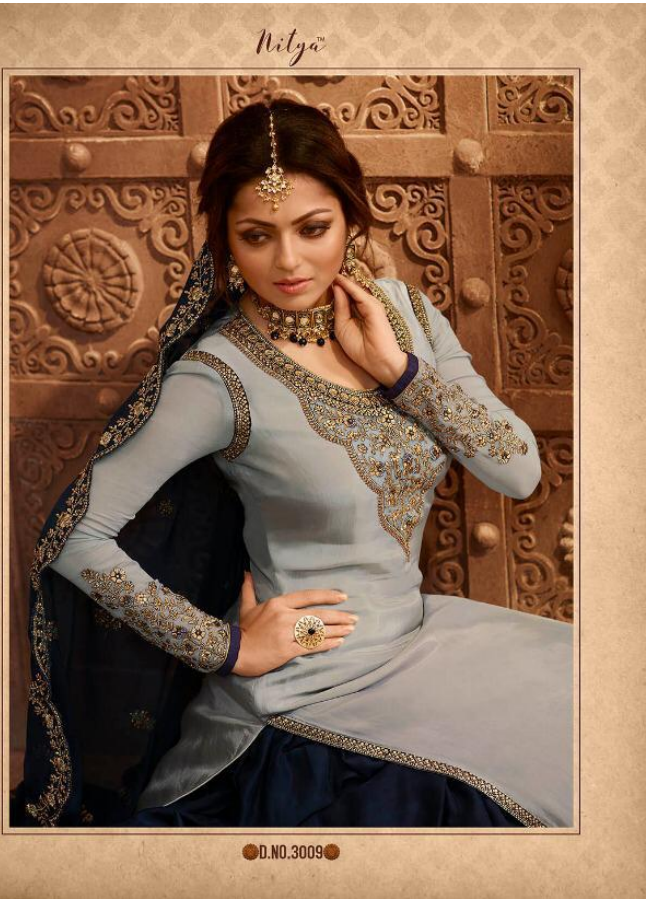
VOL : 130

DNO.	TOP	SKIRT (Unstiched)	BOTTOM-2	DUPATTA
3001	Satin Georgette With Santoon Inner	Georgette with Santoon Inner	Santoon	Net
3002	Rangoli Shaded With Santoon Inner	Georgette with Santoon Inner	Santoon	Georgette
3003	Satin Georgette With Santoon Inner	Net with Satin Inner	Santoon	Net
3004	Satin Georgette With Santoon Inner	Georgette with Santoon Inner	Santoon	Georgette
3005	Satin Georgette With Santoon Inner	Net with Santoon Inner	Santoon	Net
3006	Satin Georgette With Santoon Inner	Georgette with Santoon Inner	Santoon	Georgette
3007	Vaishnavi Georgette With Santoon Inner	Net with Satin Inner	Santoon	Net
3008	Burfi Silk With Santoon Inner	Rangoli Silk with Santoon Inner	Santoon	Net
3009	Satin Georgette With Santoon Inner	Georgette with Satin Inner	Santoon	Georgette

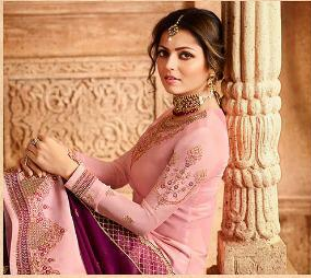




● D.NO.3008 ●

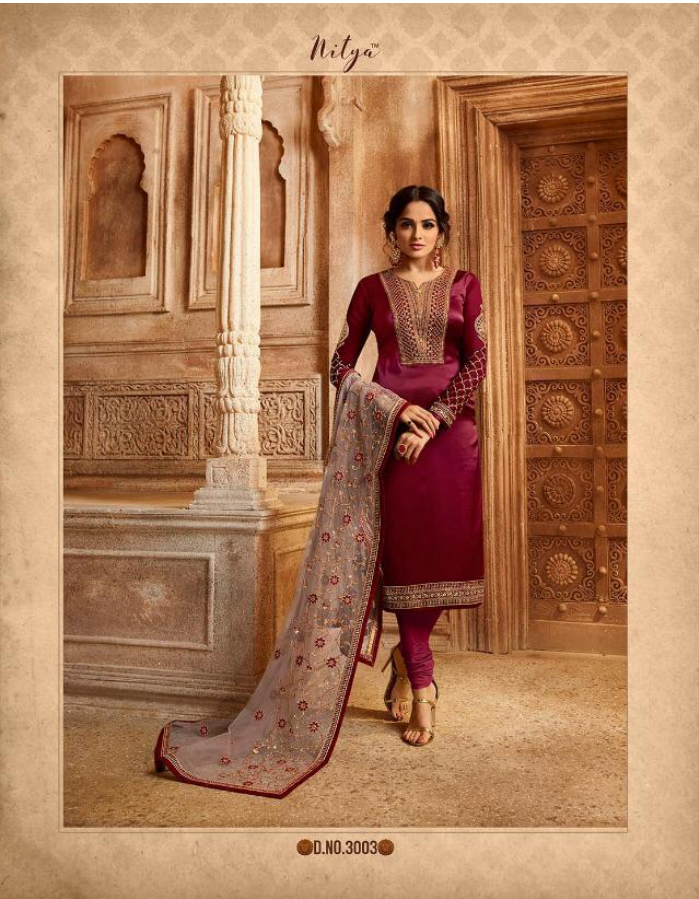


Nitya



● D.NO.3006 ●





LICE

LT FABRICS®



E-594, 595, NEW TEXTILE MARKET, RING ROAD, SURAT - 395002
PH : +91-261-2351571
Email : ltfabricsnm@gmail.com

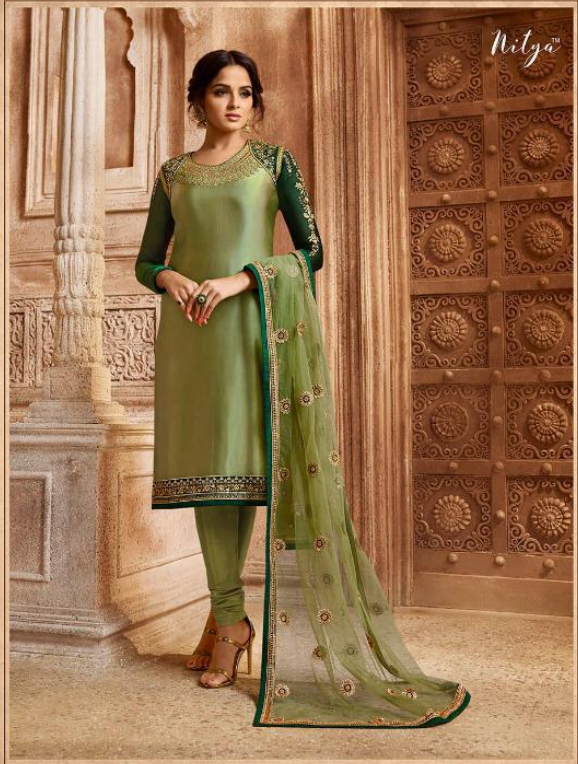
This Book/Catalogue/Document designs are protected under the design act as well as under the copyright act. Any unauthorized sharing, publishing, reproduction, distribution and modification of any images, photographs and contents, totally or in part, for any purpose without the prior written permission of the publisher is strictly prohibited and punishable as per the law in force.

complementary copy | not for sale



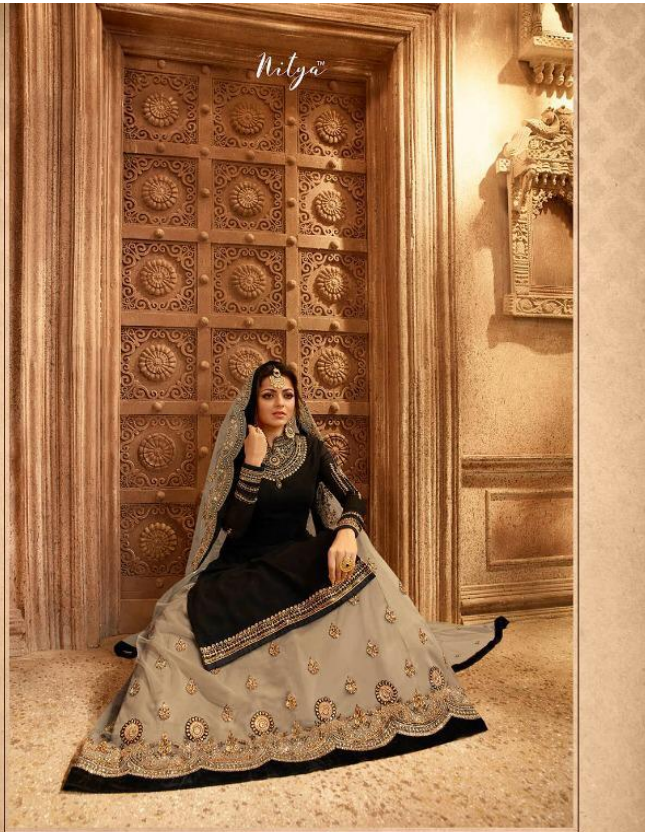
VOL-130





● D.NO.3001 ●





● D.NO.3007 ●





Nitya

● D.NO.3002 ●



●D.NO.3001●



●D.NO.3002●



●D.NO.3007●



●D.NO.3008●



●D.NO.3003●



●D.NO.3004●



●D.NO.3009●



●D.NO.3005●



●D.NO.3006●



● D.NO.3007 ●

Nitya



● D.NO.3002 ●



